

HIGH-CURRENT SURFACE-MOUNT POWER INDUCTORS

CEP 104,105,124,125 HT SERIES

FEATURES:

- High Frequency Design
- Shielded Construction
- Flat wire used
- Excellent Thermal Stability
- Low Profile, Low DCR.
- Super Large Current up to 28A
- Custom Inductors are available

OPTIONS:

- Tape & Reel is Standard (Qty:600pcs.) Bulk packaging Available for Smaller Quantities
- Tolerance:M=20% ,N=30% is Standard, Tighter Tolerances Available

COMMON APPLICATIONS:

- Notebook, DC/DC Converters
- Communication System
- Automotive Systems Power supplier
- LCD PDP Televisions
- Network Systems
- Computer Peripheral Equipment
- CPU Power Supply

ELECTRICAL CHARACTERISTICS:

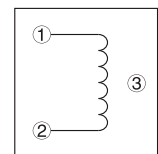
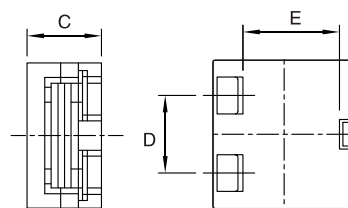
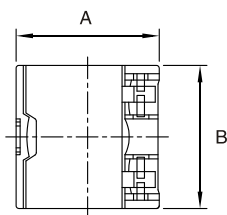
| Part Number | Inductance (uH) | DCR (mΩ)Max | Isat (A) | Irms (A) |
|----------------|-----------------|-------------|----------|----------|
| CEP104HT-0R36N | 0.36 ± 30% | 1.7 | 26.0 | 23.0 |
| CEP104HT-0R80M | 0.80 ± 20% | 3.9 | 17.0 | 15.0 |
| CEP104HT-1R4M | 1.40 ± 20% | 4.4 | 14.0 | 13.0 |
| CEP104HT-2R2M | 2.20 ± 20% | 8.7 | 10.0 | 9.5 |
| CEP104HT-3R2M | 3.20 ± 20% | 10.4 | 8.0 | 8.0 |
| CEP105HT-0R36N | 0.36 ± 30% | 1.7 | 26.0 | 28.0 |
| CEP105HT-0R80M | 0.80 ± 20% | 2.5 | 18.0 | 20.0 |
| CEP105HT-1R4M | 1.40 ± 20% | 3.2 | 14.0 | 16.0 |
| CEP105HT-2R2M | 2.20 ± 20% | 5.8 | 10.0 | 12.0 |
| CEP105HT-3R2M | 3.20 ± 20% | 7.2 | 9.0 | 11.0 |
| CEP105HT-4R3M | 4.30 ± 20% | 8.5 | 8.0 | 10.0 |
| CEP105HT-5R7M | 5.70 ± 20% | 13.2 | 7.0 | 7.6 |
| CEP105HT-7R2M | 7.20 ± 20% | 15.5 | 6.2 | 7.0 |

| Part Number | Inductance (uH) | DCR (mΩ)Max | Isat (A) | Irms (A) |
|----------------|-----------------|-------------|----------|----------|
| CEP105HT-8R8M | 8.80 ± 20% | 17.2 | 5.6 | 6.0 |
| CEP124HT-0R75M | 0.75 ± 20% | 3.0 | 14.0 | 13.0 |
| CEP124HT-1R3M | 1.30 ± 20% | 4.5 | 13.0 | 12.0 |
| CEP124HT-2R0M | 2.00 ± 20% | 6.0 | 11.0 | 10.0 |
| CEP125HT-0R90N | 0.90 ± 30% | 2.5 | 20.0 | 18.0 |
| CEP125HT-1R4N | 1.40 ± 30% | 3.4 | 16.0 | 15.0 |
| CEP125HT-2R0N | 2.00 ± 30% | 4.6 | 13.0 | 12.0 |
| CEP125HT-3R2N | 3.50 ± 30% | 9.0 | 9.0 | 8.6 |
| CEP125HT-4R6N | 4.80 ± 30% | 10.5 | 7.2 | 8.2 |
| CEP125HT-6R4N | 6.80 ± 30% | 11.0 | 6.0 | 7.8 |
| CEP125HT-8R2N | 8.60 ± 30% | 12.0 | 5.4 | 7.2 |
| CEP125HT-10R0N | 10.5 ± 30% | 13.5 | 4.7 | 6.5 |

Note:1. K= ± 10%,M= ± 20%,N= ± 30%

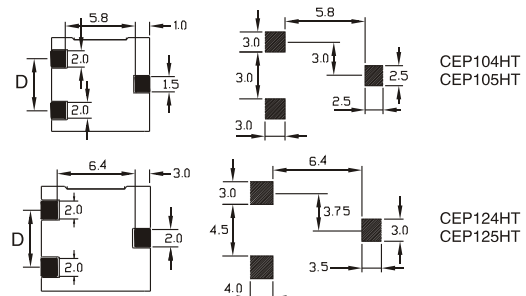
TECHNICAL INFORMATION & PHYSICAL CHARACTERISTICS:

- Inductance Testing: HP4284A, 100kHz/1V or equivalent
- RDC:QuadTech 1880 Milliohmmer
- Isat Current L value drop 65% typ.at I_{dc} against its initial value
- Irms Temperature rise 40°CMax Reference Ambient temperature
- Solderability: 75% of the lead wire Shall be covered
- Soldering Methods: Wave,Reflow
- Operating Temperature:-40°C to +105°C
- Storage Temperature: -55°C to +125°C
- Terminal bending strength:24.5N Min
- Moisture resistance: $\Delta L/L \leq \pm 10\%$ $\Delta Q/Q \leq \pm 25\%$



Dimensions(mm)

| Part Number | A | B | C | D | E |
|-------------|-------------|-------------|-------------|-----------|-----------|
| CEP104HT | 11.0 ± 0.30 | 9.35 ± 0.30 | 4.50 ± 0.30 | 6.00 ref. | 5.80 ref. |
| CEP105HT | 11.0 ± 0.30 | 9.35 ± 0.30 | 5.50 ± 0.30 | 6.00 ref. | 5.80 ref. |
| CEP124HT | 12.5 ± 0.30 | 12.5 ± 0.30 | 4.0 ± 0.30 | 7.50 ref. | 6.40 ref. |
| CEP125HT | 12.5 ± 0.30 | 12.5 ± 0.30 | 5.0 ± 0.30 | 7.50 ref. | 6.40 ref. |



LAND PATTERN

Note:All specifications subject to change without notice.