

RID 型磁芯 (CORE RIDTYPE)

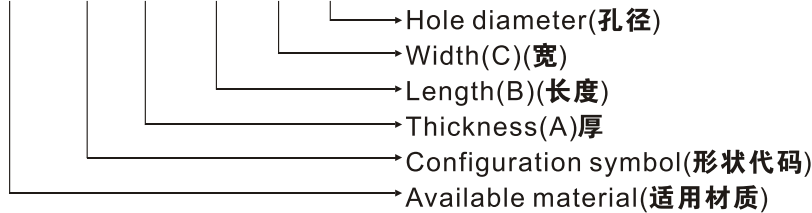
用途：整合变压器

APPLICATIONS: BALUN TRANSFORMERS

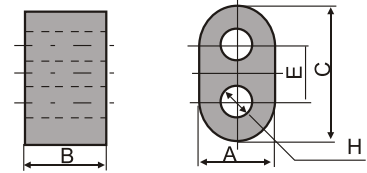
ORDERING CODE

Example:

SD6 RID 3 × 2 × 5 H1.2



CONFIGURATIONS:



DIMENSION OF MAIN PRODUCTIONS:

UNIT:mm

Ordering code	A	B	C	H	E
RID3×2×5H1.2	3.3±0.2	2.0±0.2	5.2±0.3	1.2±0.1	2.6
RID3×2×5H1.2	3.0±0.2	2.0±0.2	5.2±0.3	1.2±0.1	2.6
RID3×3×5H1.2	3.3±0.2	3.0±0.2	5.2±0.3	1.2±0.1	2.6
RID3×3×5H1.2	3.0±0.2	3.0±0.2	5.2±0.3	1.2±0.1	2.6
RID3×5×5H1.2	3.3±0.2	5.0±0.3	5.2±0.3	1.2±0.1	2.6
RID3×4×6H1.5	3.0±0.2	4.0±0.3	6.0±0.3	1.5±0.1	3.0
RID3×10×6.5H1	3.0±0.2	10.0±0.4	6.5±0.3	1.0±0.1	3.5
RID6.5×4×12H3.8	6.5±0.3	4.0±0.3	12.0±0.5	3.8±0.25	5.5
RID7.5×5×13H3.8(R)	7.5±0.3	5.0±0.3	13.3±0.5	3.8±0.25	5.8
RID7.5×7×13H3.8(R)	7.5±0.3	7.0±0.3	13.3±0.5	3.8±0.25	5.8
RID8×7×15H5	8.0±0.3	7.0±0.3	15.0±0.5	5.0±0.25	7.0
RID8×14×15H5	8.0±0.3	14.0±0.5	15.0±0.5	5.0±0.25	7.0

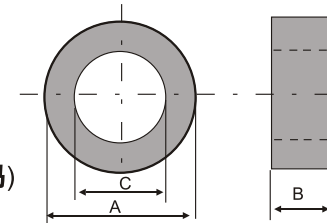
T 型磁芯 (CORE T TYPE)

ORDERING CODE:

Example:SD6 T 4 × 2 × 1.5



CONFIGURATIONS:



APPLICATION: 1.EMI/RFI suppression. 2.Pulse and Matching transformer.
3.Choke(Mixer) 4.Input filters

DIMENSION OF MAIN PRODUCTIONS:

UNIT:mm

Ordering code	A	B	C	Ordering code	A	B	C
T4×2×1.5	4±0.2	2±0.2	1.5±0.2	T12×5×8	12±0.4	5±0.3	8±0.4
T4.8×0.5×3.4	4.8±0.2	0.5±0.15	3.4±0.2	T14×3.5×8	14±0.4	3.5±0.3	8±0.4
T4.8×1.5×2.8	4.8±0.2	1.5±0.15	2.8±0.2	T16×7×12	16±0.4	7±0.3	12±0.4
T6×2×3	6±0.3	2±0.2	3±0.3	T16×8×12	16±0.4	8±0.3	12±0.4
T8×4×4	8±0.3	4±0.2	4±0.3	T16×9×12	16±0.4	9±0.3	12±0.4
T9.2×3×5	9.2±0.3	3±0.2	5±0.3	T18×6×10	18±0.5	6±0.3	10±0.5
T9.53×4.57×4.69	9.53±0.3	4.57±0.3	4.6±0.3	T19×10×8	19±0.5	10±0.4	8±0.5
T10×5×8	10±0.4	5±0.3	8±0.3	T23×7×13	23±0.5	7±0.3	13±0.5
T12×3×6	12±0.4	3±0.2	6±0.3	T29×7.5×18	29±0.5	7.5±0.3	18±0.5