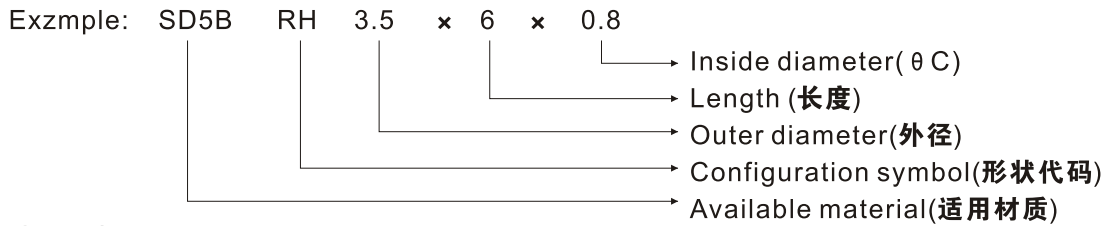


RH

型磁芯 Bead (Shield Type)

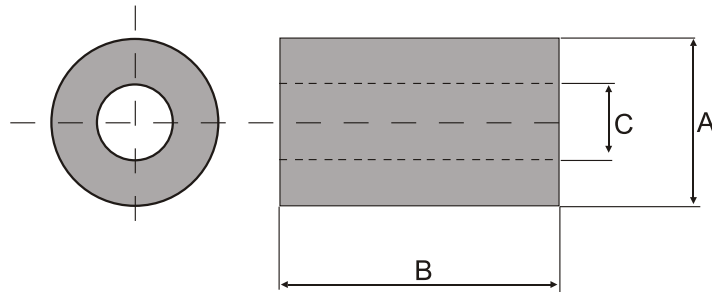
ORDERING CODE:



APPLICATION:

- 1.抑制电磁干扰(Rid a circuit of EMI.)
- 2.抗音频干扰(Referred to RFI.)
- 3.计算机内外部主电缆
(Internal and external computer data power cables.)
- 4.噪音抑制(Noise choke.)

CONFIGURATIONS:



DIMENSION OF MAIN PRODUCTIONS:

UNIT:mm

Ordering code	A	B	C	Ordering code	A	B	C
RH2.5 × 1 × 1	2.5 ± 0.1	1.0 ± 0.2	1.0 ± 0.15	RH7.5 × 7.5 × 2.39	7.5 ± 0.2	7.54 ± 0.3	2.39 ± 0.2
RH3 × 1.7 × 1	3.0 ± 0.1	1.7 ± 0.2	1.0 ± 0.15	RH9.7 × 10.4 × 4.7	9.7 ± 0.3	10.4 ± 0.3	4.7 ± 0.2
RH3 × 12 × 1	3.0 ± 0.15	12.0 ± 0.4	1.0 ± 0.15	RH12.8 × 15 × 8	12.8 ± 0.4	15.0 ± 0.4	8.0 ± 0.4
RH3.5 × 4.5 × 0.8	3.5 ± 0.2	4.5 ± 0.3	0.8 ± 0.15	RH14.2 × 28 × 6.35	14.2 ± 0.6	28.0 ± 0.8	6.35 ± 0.4
RH3.5 × 6 × 1.3	3.5 ± 0.2	6.0 ± 0.3	1.3 ± 0.15	RH14.2 × 28 × 6.7	14.2 ± 0.6	28.0 ± 0.8	6.7 ± 0.8
RH3.5 × 8.9 × 0.8	3.5 ± 0.2	8.9 ± 0.3	0.8 ± 0.15	RH14.2 × 28 × 8	14.2 ± 0.6	28.0 ± 0.8	8 ± 0.8
RH3.5 × 12 × 1.2	3.5 ± 0.2	12.0 ± 0.4	1.2 ± 0.15	RH17.5 × 17 × 9.5	17.5 ± 0.8	17.0 ± 0.6	9.5 ± 0.6
RH3.5 × 12 × 1	3.5 ± 0.2	12.0 ± 0.4	1.0 ± 0.15	RH17.5 × 28.5 × 9.5	17.5 ± 0.8	28.5 ± 0.8	9.5 ± 0.6
RH4 × 10 × 2	4.0 ± 0.2	10.0 ± 0.3	2.0 ± 0.15	RH18.4 × 28 × 9.5	18.4 ± 0.8	28.0 ± 0.8	9.5 ± 0.6
RH6 × 30 × 2.5	6.0 ± 0.2	30.0 ± 0.1	2.5 ± 0.2	RH25.7 × 28.5 × 13	25.7 ± 0.8	28.5 ± 0.8	13.0 ± 0.8

* “B”尺寸可在合理范围内可调。