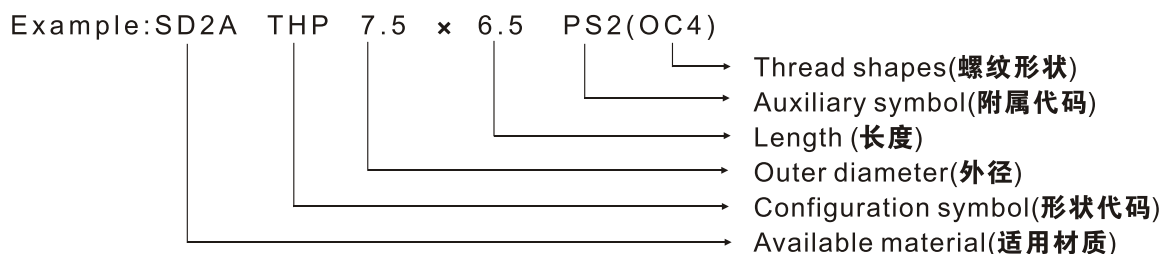


THP 型磁芯 (Threaded Cup Cores)

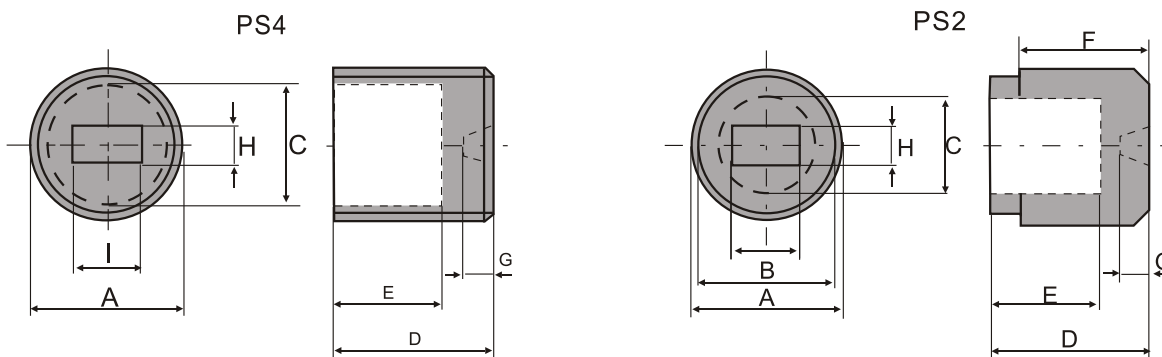
用途：IFT. 及各种之滤波器(与 DR 型磁芯配对使用)。

APPLICATIONS: IFT.AND VARIOUS FILTER(PAIR TO DR TYPE CORE WHEN IN USING).

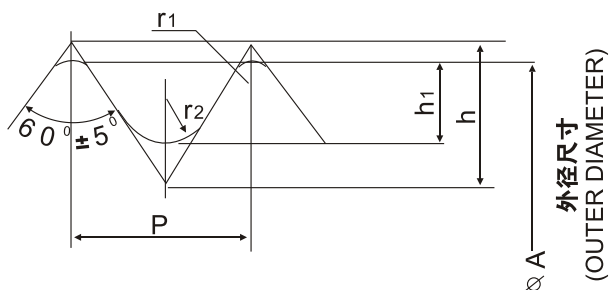
ORDERING CODE:



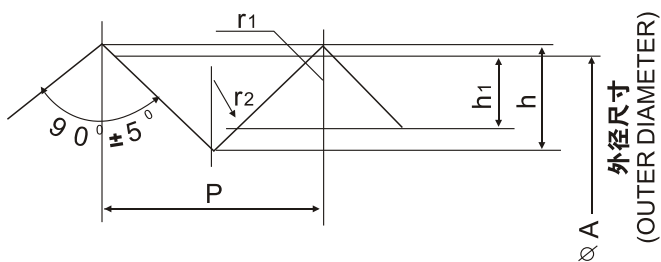
CONFIGURATIONS:



OC3 螺纹形状图
(THREADED, DIAGRAM OF OC3 TYPE)



OC4 螺纹形状图
(THREADED, DIAGRAM OF OC4 TYPE)



THP

DIMENSION SHAPES AND MAIN PRODUCTIONS:

UNIT:mm

THREAD	Pitch P	Depth engagement h1	Degree θ°	Crest radius r1	Root radius r2
OC-3	0.50 ± 0.03	$0.23 \begin{smallmatrix} +0.10 \\ -0.05 \end{smallmatrix}$	$60^\circ \begin{smallmatrix} + \\ - \end{smallmatrix} 5^\circ$	0.08	0.22
	0.60 ± 0.03	$0.28 \begin{smallmatrix} +0.10 \\ -0.03 \end{smallmatrix}$	$60^\circ \begin{smallmatrix} + \\ - \end{smallmatrix} 5^\circ$	0.08	0.22
	0.75 ± 0.03	$0.35 \begin{smallmatrix} +0.14 \\ -0.03 \end{smallmatrix}$	$60^\circ \begin{smallmatrix} + \\ - \end{smallmatrix} 5^\circ$	0.08	0.22
	1.00 ± 0.03	$0.47 \begin{smallmatrix} +0.12 \\ -0.03 \end{smallmatrix}$	$60^\circ \begin{smallmatrix} + \\ - \end{smallmatrix} 5^\circ$	0.08	0.22
OC-4	0.5 ± 0.03	$0.17 \begin{smallmatrix} +0.06 \\ -0.03 \end{smallmatrix}$	$90^\circ \begin{smallmatrix} +3^\circ \\ -5 \end{smallmatrix}$	0.05	0.15
	0.6 ± 0.03	$0.20 \begin{smallmatrix} +0.08 \\ -0.03 \end{smallmatrix}$	$90^\circ \begin{smallmatrix} +3^\circ \\ -5 \end{smallmatrix}$	0.05	0.15
	0.8 ± 0.03	$0.28 \begin{smallmatrix} +0.1 \\ -0.03 \end{smallmatrix}$	$90^\circ \begin{smallmatrix} +3^\circ \\ -5 \end{smallmatrix}$	0.09	0.15

DIMENSION OF MAIN PRODUCTIONS:

UNIT:mm

Ordering code	A	B	C	D	F	G	H	P	I
THP5.7 × 5.3PS2	$5.7 \begin{smallmatrix} +0.06 \\ -0 \end{smallmatrix}$	$5.4 \begin{smallmatrix} +0.05 \\ -0.3 \end{smallmatrix}$	$4.2 \begin{smallmatrix} +0.2 \\ -0.15 \end{smallmatrix}$	5.3 ± 0.15	$3.0 \begin{smallmatrix} +0.5 \\ -0 \end{smallmatrix}$	0.8 ± 0.15	1.3 ± 0.15	0.6 ± 0.15	3.6 ± 0.15
THP5.8 × 5.3PS2	$5.8 \begin{smallmatrix} +0.08 \\ -0 \end{smallmatrix}$	$5.4 \begin{smallmatrix} +0.1 \\ -0.4 \end{smallmatrix}$	4.25 ± 0.15	5.3 ± 0.2	$3.0 \begin{smallmatrix} +0.5 \\ -0 \end{smallmatrix}$	0.65 ± 0.15	1.3 ± 0.15	0.6 ± 0.15	3.6 ± 0.15
THP6.5 × 5.7PS2	6.5 ± 0.03	$6.0 \begin{smallmatrix} +0.15 \\ -0.1 \end{smallmatrix}$	5.0 ± 0.15	5.7 ± 0.2	4.3 ± 0.3	0.8 ± 0.15	1.5 ± 0.15	0.7 ± 0.15	3.9 ± 0.15
THP7.5 × 6.5PS2	$7.45 \begin{smallmatrix} +0 \\ -0.8 \end{smallmatrix}$	$6.8 \begin{smallmatrix} +0.1 \\ -0.3 \end{smallmatrix}$	5.35 ± 0.2	6.5 ± 0.2	4.3 ± 0.3	0.9 ± 0.2	2.0 ± 0.15	0.8 ± 0.2	4.8 ± 0.2
THP8.75 × 8.5PS2	8.75 ± 0.03	$8.0 \begin{smallmatrix} +0.2 \\ -0.3 \end{smallmatrix}$	$6.3 \begin{smallmatrix} +0.3 \\ -0 \end{smallmatrix}$	8.5 ± 0.2	5.3 ± 0.2	1.0 ± 0.2	2.0 ± 0.15	0.8 ± 0.1	4.8 ± 0.15
THP5.95 × 2.7PS4	5.95 ± 0.03		4.6 ± 0.15	2.7 ± 0.2		1.0 ± 0.15	1.0 ± 0.15	0.6 ± 0.1	3.6 ± 0.15
THP6.49 × 5.7PS4	6.49 ± 0.03		5.28 ± 0.15	5.7 ± 0.2		0.8 ± 0.15	1.5 ± 0.15	0.8 ± 0.15	4.0 ± 0.2
THP7.5 × 6.5PS4	$7.45 \begin{smallmatrix} +0 \\ -0.08 \end{smallmatrix}$		5.6 ± 0.2	6.5 ± 0.2		0.9 ± 0.2	2.0 ± 0.15	0.8 ± 0.2	4.8 ± 0.2
THP8.75 × 8.5PS4	8.47 ± 0.03		$6.5 \begin{smallmatrix} +0.3 \\ -0 \end{smallmatrix}$	8.5 ± 0.2		1.0 ± 0.2	2.0 ± 0.15	1.0 ± 0.2	5.0 ± 0.2