

SCTK667B series retro-fit (split-core) current transformer has been specially designed to facilitate their installation in new or already existing net works. They may be installed without opening any cable or bus-bar circuit. An internal precision resistor across the secondary winding of the CT provides a low safe voltage output. It can save time and the installation costs.

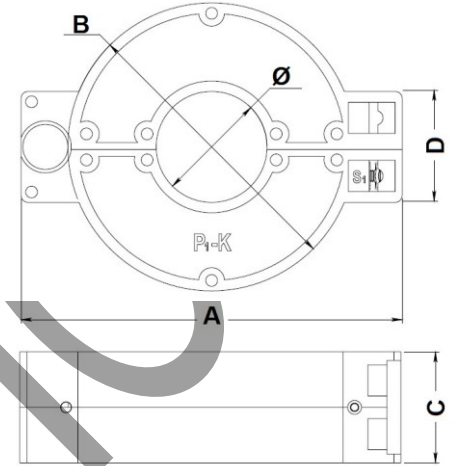
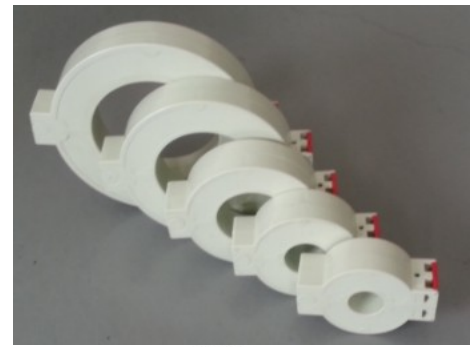
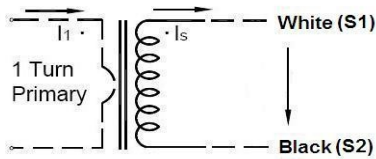
### ◆ Features

- Epoxy Potting, Double-screw fastening, safe, easy to install, portable
- Wide inner window, allowing clamping of big cables or bus-bars
- Wide range of sizes to accommodate all the existing installations

### ◆ Applications

- Current measurement, monitoring and protection for electrical wiring and equipment.
- Current and power measurement for electric motors, lighting, air compressor, heating and ventilation system, air-condition equipment and automation – control system.
- Current, power and energy monitoring device.
- Relay protection device.

### ◆ Circuit connection diagram



### ◆ Technique Index

Electrical Parameter	
Frequency	50-400Hz
Rated Input	5A-3000A
Measuring range	5%In-130%In
Rated Output	0-10V(AC) or 0-5A
Ratio	$\leq \pm 0.1\%$
Phase angle	$\leq \pm 5\text{min}$
Dielectric strength	3.0KV/1mA/1min
Insulation Resistance	DC500V/100MΩ min

Mechanical Parameter	
Case	ABS /UL94-V0
Bobbin	PBT
Core	Silicon steel
Internal structure	Epoxy
Construction	Tie
Operating Temp	-25℃~+75℃
Operating Humidity	$\leq 85\%$
Output Connection	Terminal

### ◆ Type Selection (Output: A/V/mA)

P/N	Rated Input (A)	Output (A/V/mA)	Accuracy	Dimensions(mm)				
				Ø	A	B	C	D
SCTK667B-025	0-400A	1A/5A 0-10V 0-500mA	0.1	25	100	70	33	32
SCTK667B-032	0-630A			32	110	83	33	32
SCTK667B-045	0-1000A			45	123	96	33	32
SCTK667B-055	0-1500A			55	134	106	33	32
SCTK667B-080	0-2000A			80	168	139	33	32
SCTK667B-100	0-3000A			102	198	168	33	32